



Advanceesmedia



Advanced Equipment
And Services Inc



Advancees_media



Advancees Media



ADVANCED

EQUIPMENT AND SERVICES

LARGE BRACKISH REVERSE OSMOSIS SERIES (LBWRO) - INDUSTRIAL BRACKISH WATER SYSTEMS -

Our Brackish Water Reverse Osmosis portfolio includes systems to fit needs in large size projects in the industrial and commercial industry. Our Brackish Water systems can come Skid mounted or fully Containerized. Standard series are described below; however, we can also customize your unit based on your unique water requirements.



CONTAINERIZED

Works in the most
harsh and corrosive
conditions



SKID MOUNTED

Easy to transport and
install, with small
footprint for reduced
space



SOLAR/HYBRID

Ensure operation with
our full solar or hybrid
system

**REMOTE MONITORING
INCLUDED IN ALL
OUR SYSTEMS!**

KEY FEATURES:

- Premium quality
- Continuous operation
- Harsh duty
- Corrosion resistant features
- Industrial grade components
- 3 years prorated membrane warranty
- Easy to read and operate controls
- Advanced customization available
- Backed by years of RO design experience

TYPICAL INDUSTRIES:

- Drinking water
- Beverage/ Bottle water
- Food Processing
- Pharmaceutical
- Electronics productions
- Automotive
- Boiler feedwater
- Cooling tower make-up
- Chemical manufacturing
- Metal finishing
- Large scale irrigation
- And many other industrial and commercial applications

TECHNICAL SUPPORT

Commissioning, Start-up,
operators training, maintenance
training, retrofits and
modernization are available

ZERO DOWNTIME

We supply all the basic two years
critical spare parts with our units.
Well-known and proved
components are used in all of our
systems.

TURNKEY SOLUTIONS

We can provide the basic RO
systems plus all pretreatment
and Post treatment such as:

- Chemical injection systems
- Multimedia systems.
- Calcite contact tanks
- Ozono generators
- UV disinfection
- H2S removal

For more information on any of
our products or services please
visit us on the Web at:

www.advancees.com

Ph +1 954 8571895 USA

TECHNICAL SUPPORT

Commissioning, Start-up, operators training, maintenance training, retrofits and modernization are available

ZERO DOWNTIME

We supply all the basic two years critical spare parts with our units. Well-known and proved components are used in all of our systems.

TURNKEY SOLUTIONS

We can provide the basic RO systems plus all pretreatment and Post treatment such as:

- Chemical injection systems
- Multimedia systems.
- Calcite contact tanks
- Ozono generators
- UV disinfection
- H2S removal

For more information on any of our products or services please visit us on the Web at:

www.advancees.com

Ph +1 954 8571895 USA

DESIGNED, ENGINEERED & MANUFACTURED

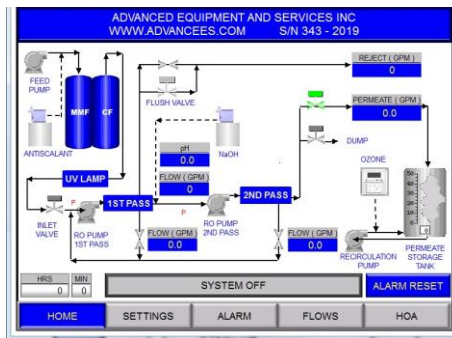


IN THE USA

STANDARD FEATURES:

- Stainless Steel Multistage Pump
- PLS driven control panel & VDF
- 7" HMI for operator interface
- Heavy Duty FRP or Stainless-Steel Pressure Vessels
- Powder Coated Frames
- Nema 4X electrical equipment
- 5 Micron Sediment Pre-filter
- Product TDS Monitor
- Permeate/ Concentrate Flowmeters
- High-and-Low Pressure Protection
- Automatic Inlet Valve
- Pre and Post Flush
- Pretreatment Lockout
- Factory Performance Tested
- Sample Valves
- Pressure Gauges
- Automatic feed water flush on startup
- Digital flow meter
- TEFC electric motors

Remote Control Monitor



OPTIONAL FEATURES:

- Automatic product water flush on shutdown
- Conductivity monitor/ controller driven product diverter valve to dump unacceptable water
- Energy recovery system (Turbo or Pressure exchangers)
- Passivation treatment of all welded SS316L, Super Duplex S.S piping
- Pressure transducers

ADDITIONAL FEATURES:

- EDI Electrode-ionization
- Ultrafiltration
- Recirculation
- Automatic blending
- ORP
- Ozone Injection
- Tube setting system
- UV sterilization
- Chlorination
- Dichlorination
- PH adjusts
- MM filters (sand, anthracite, activate carbon)
- Ion exchanger
- Turbidity monitor
- Chemical Injection System
- Suction and discharge pulsation damper

	Performance					
	Output		Product	Feed	Reject	Recovery
	GPD	M3/D	GPM	GPM	GPM	%
LBWRO-0220	220000	836.5	218.3	311.9	93.6	70